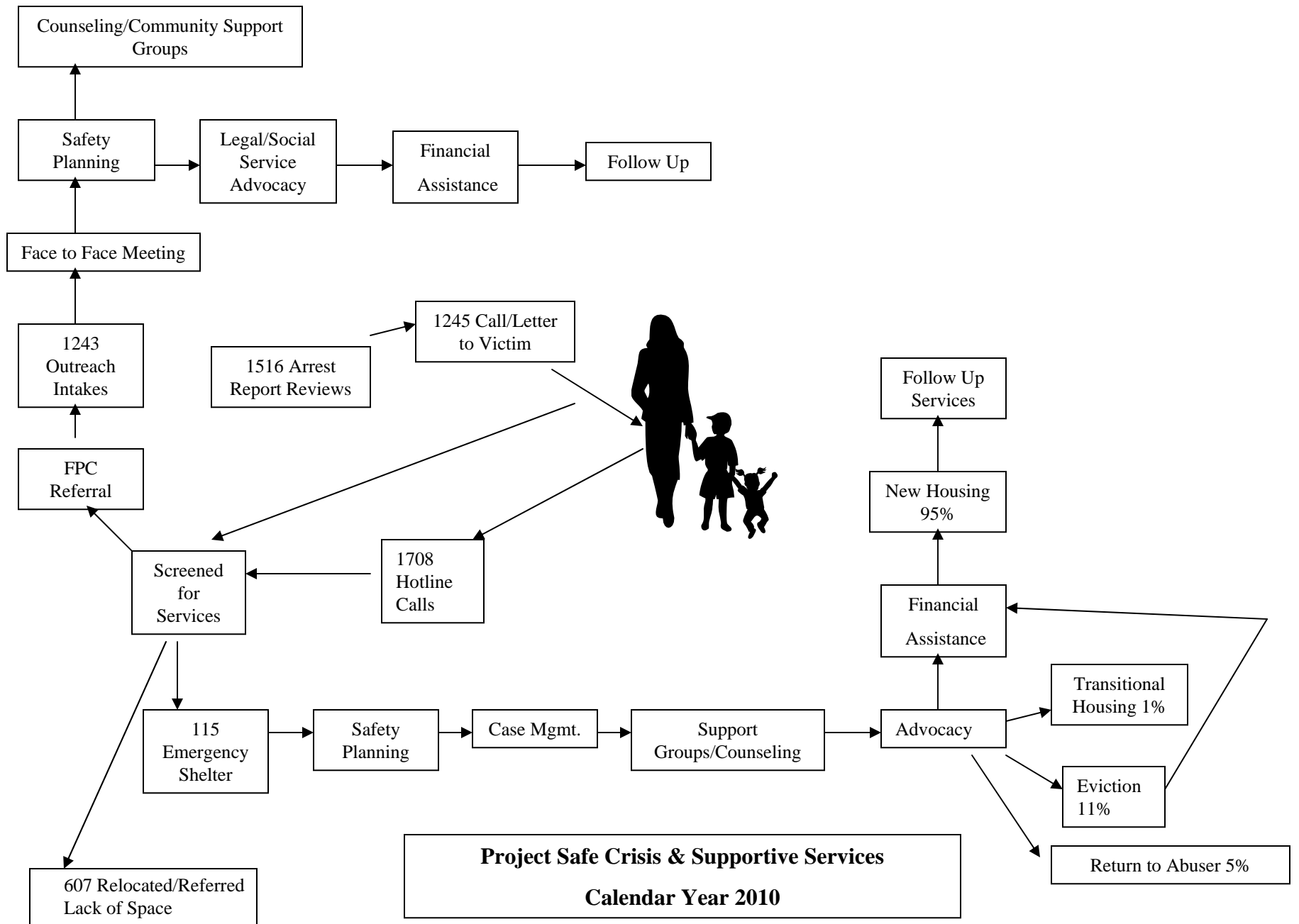
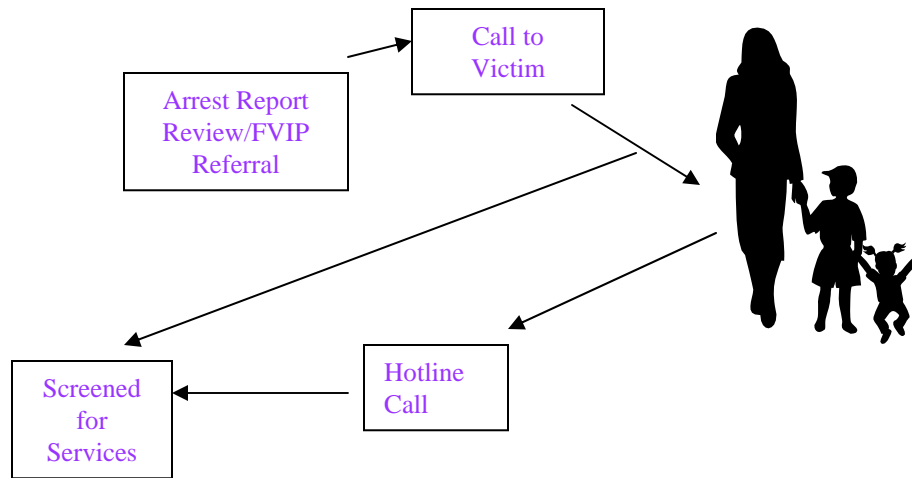


Project Safe

2010 Annual Report



1516 DV Reports Reviewed in 2010



97% of callers are female
48% of crisis calls from A-CC
Average age is 34
57% first-time callers
37% in danger

1708 Crisis Calls in 2010

1463 Victim Initiated
245 Third Party
(1286 total calls in 2000)

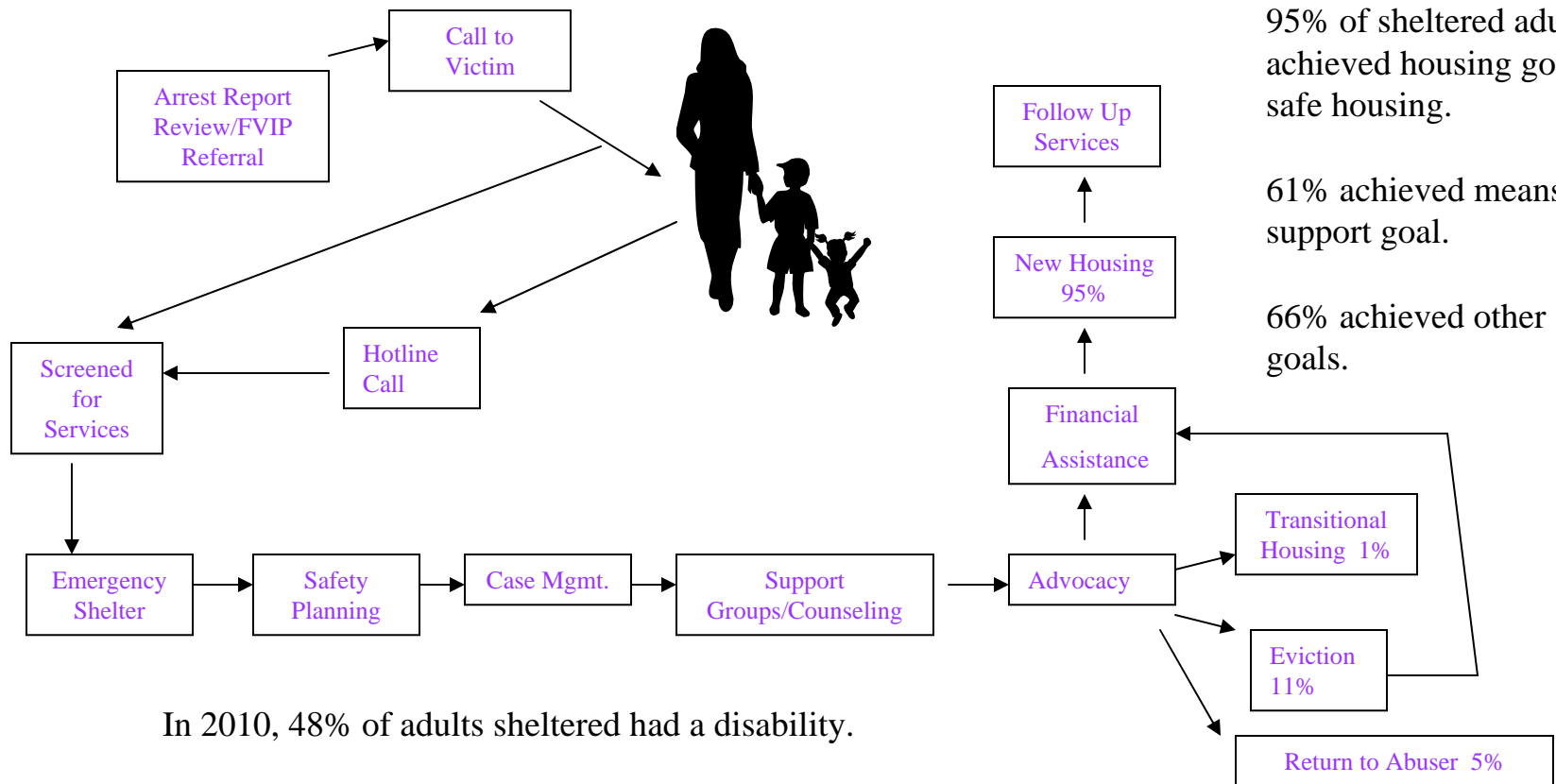
36% of callers are self-referrals
12% referred by 1-800 number
8% referred by other shelters
8% family or friends
7% police department

115 women and children sheltered in 2010

93% capacity, 5428 bednights, 56 days mean length of stay

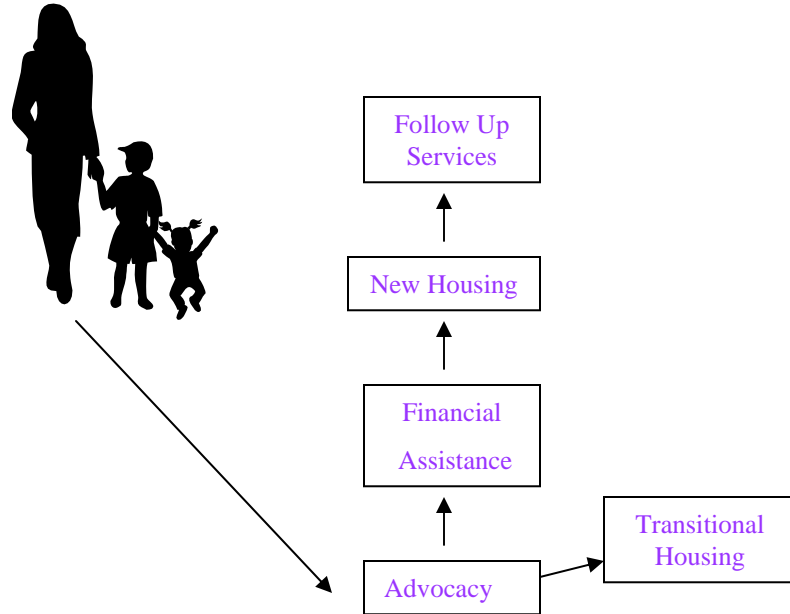
(32 with children, 41 single adults, range =2-516)

607 relocated/referred because PSI was full)

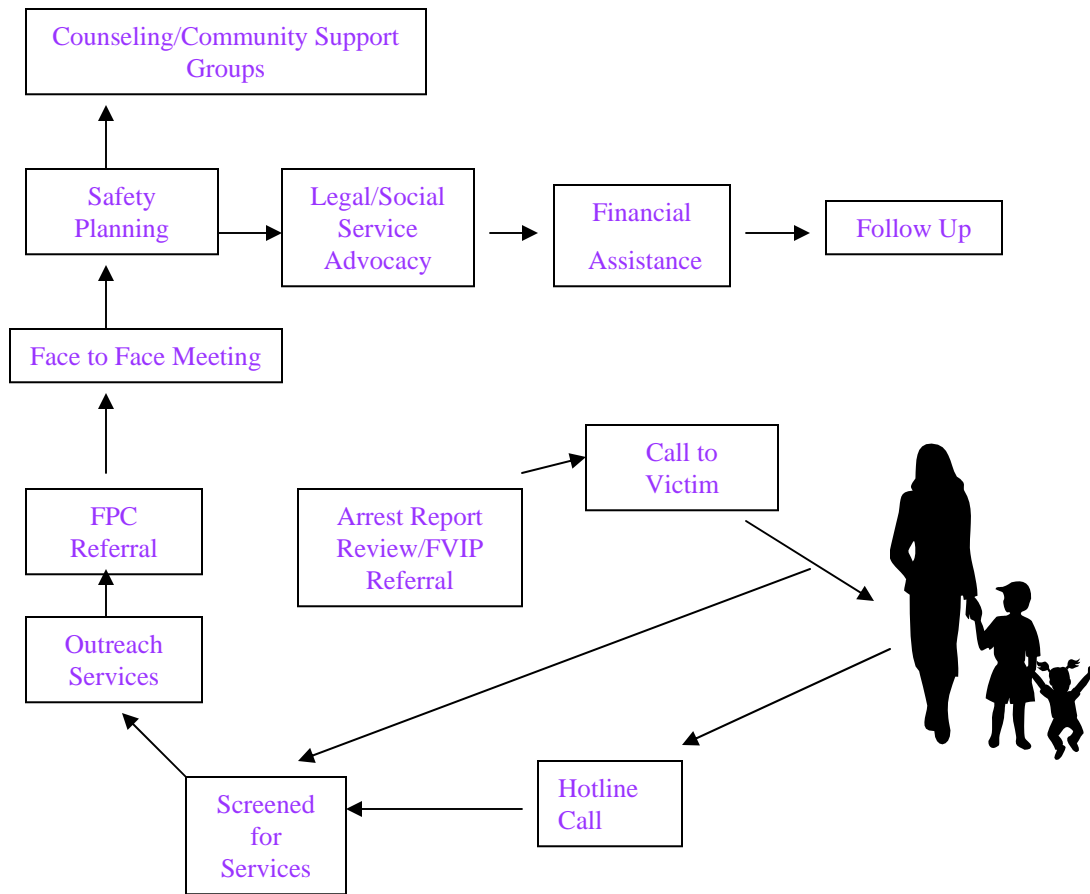


Project Safe was the first domestic violence shelter in Georgia to establish a comprehensive follow-up services program. Since 2000, staff have maintained relationships with former shelter residents to alleviate isolation and loneliness, and promote economic stability.

In FY10 the budget for financial assistance is \$163,025—up from \$2,000 in FY00.



Although most women live independently, many live in poverty. The transitional housing initiative began in 2004 to provide long-term, intensive support and includes rent, tuition, childcare, health-care, transportation and counseling. In FY10, HPRP funds passed through A-CC added more transitional housing.



Outreach is our largest area of growth. Costs per client served in outreach average \$166, compared to \$2,557 in shelter and \$6,800 for transitional housing.

1243 new outreach clients in 2010 (19 in '02)

Victim Liaison Project started in July 07, combining police report review with outreach at bond hearings and contact after FVIP referral. Outreach at “fast track” arraignments began in August 2008.

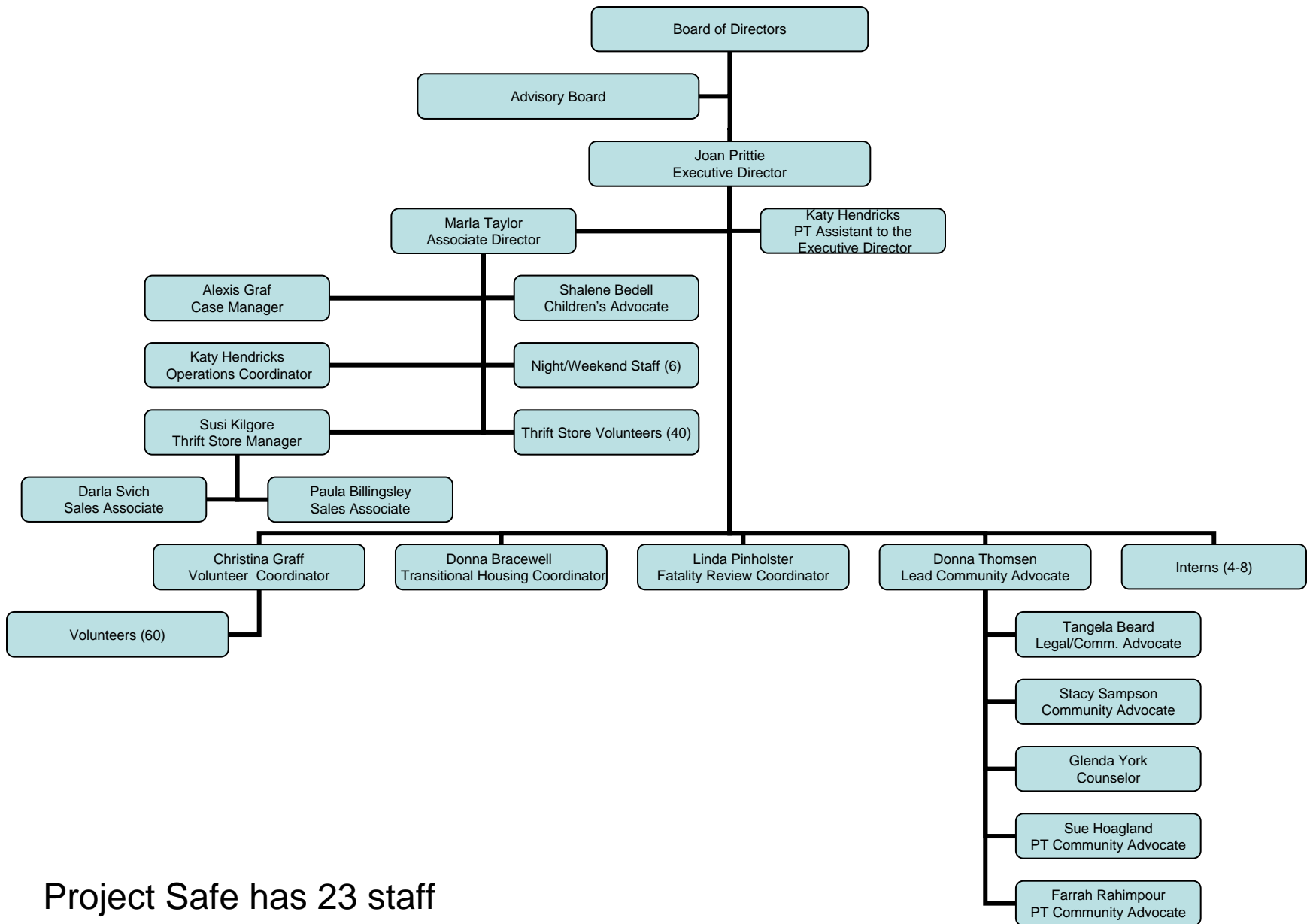
Individual counseling services are offered to both adults and children at the FPC since spring 2007.

Superheroes support group for child witnesses began in 2008, and a caregiver group added in 2009. Mantra group for teens was created in 2010.

Emotional abuse support group began in 2004 to reach out to those experiencing non-physical forms of abuse, and has grown steadily since. The Madison CSG began in 2008. The Clarke and Madison CSGs were renamed “Survive & Revive” in 2010.

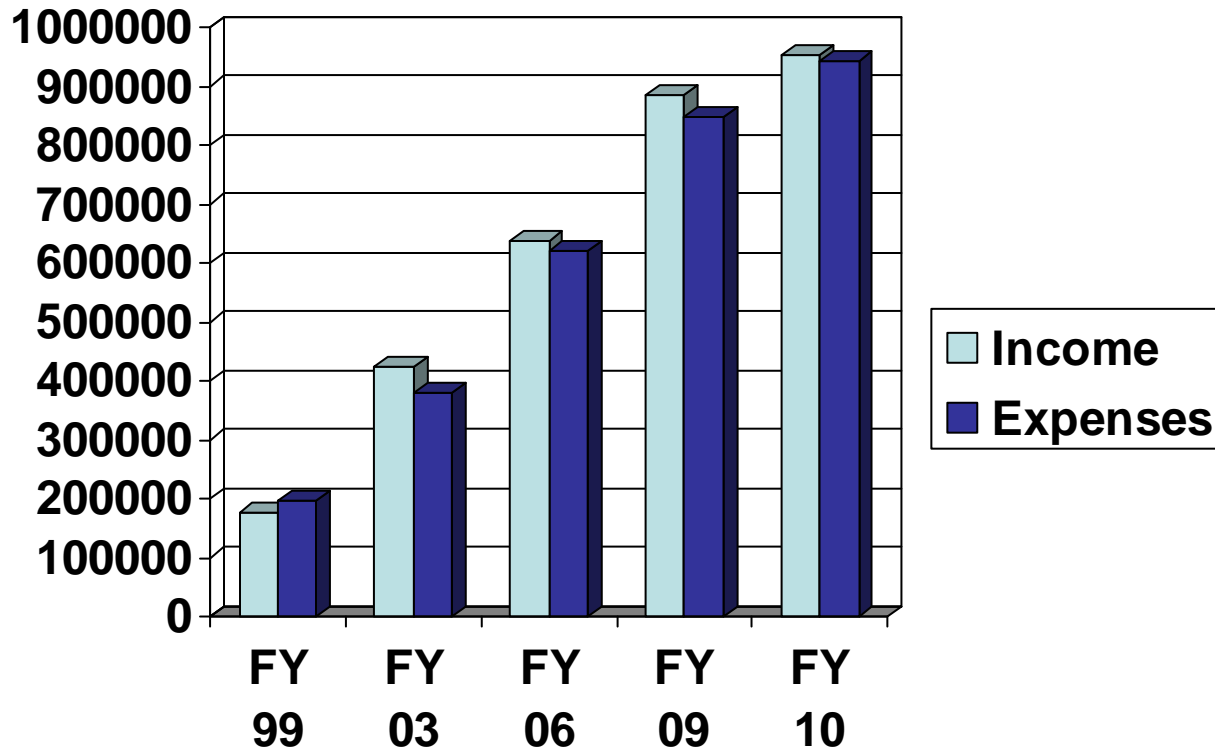
Performance Survey Outcomes 2010

Measure	Explanation	Score (1-5)
Safety	Mean score for client survey statement, "I was assisted in meeting my immediate needs."	4.8
Safety	"I now know ways to manage my safety."	4.6
Resources	"I have learned how to contact the sources of help available to me."	4.7
Satisfaction	"I am satisfied with the services I received from Project Safe."	4.9

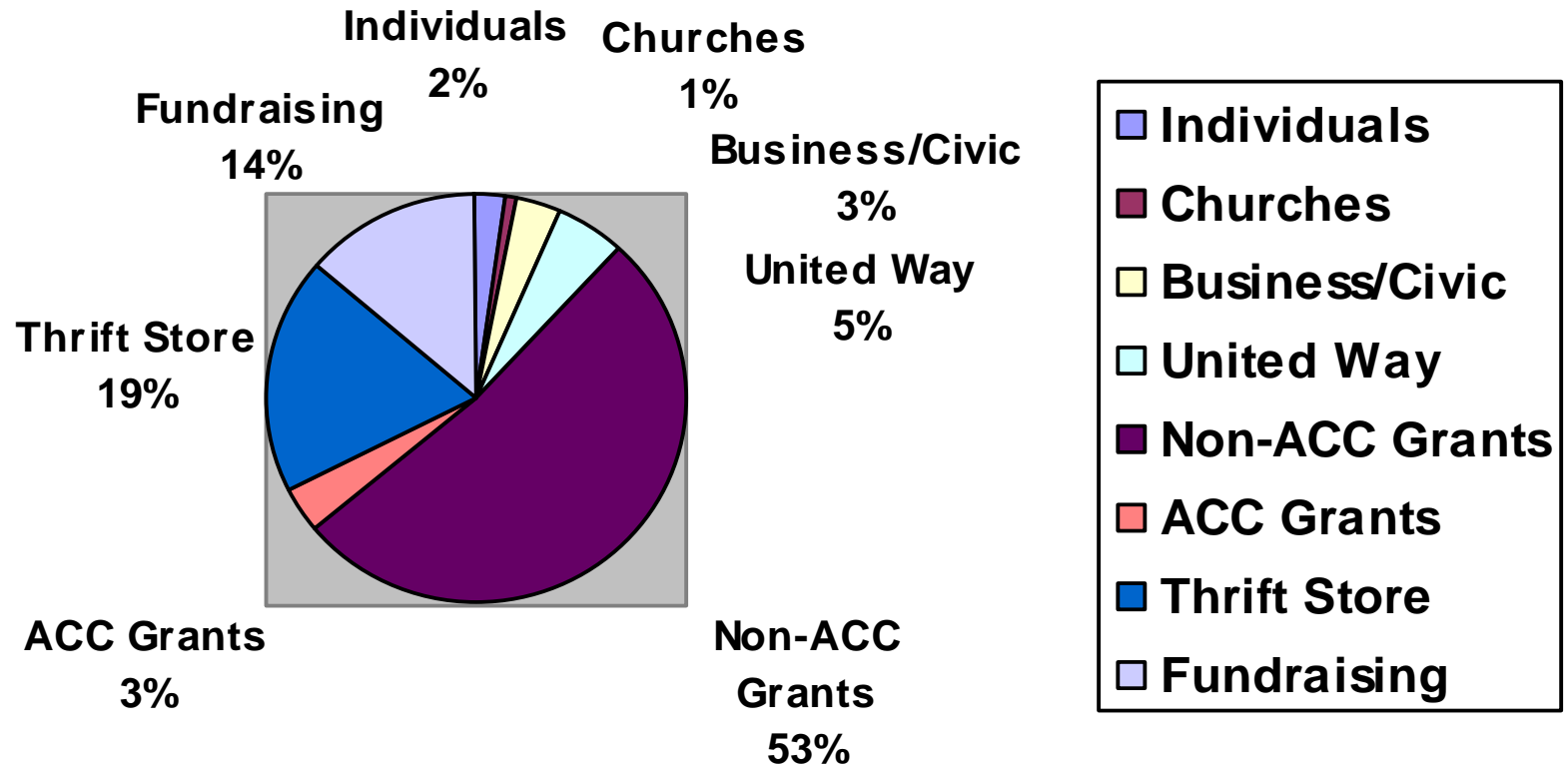


Project Safe has 23 staff

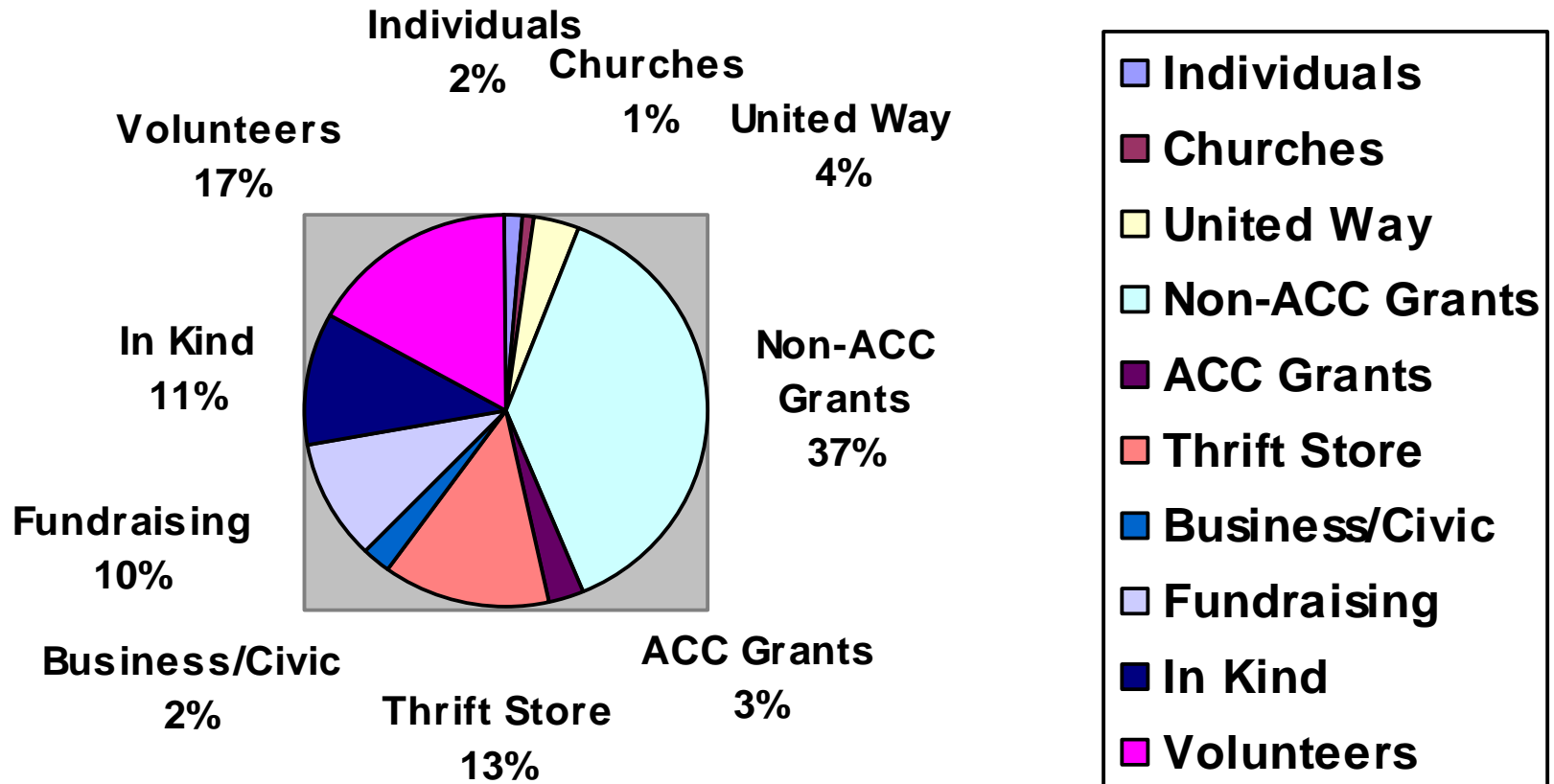
Annual Revenues and Expenses



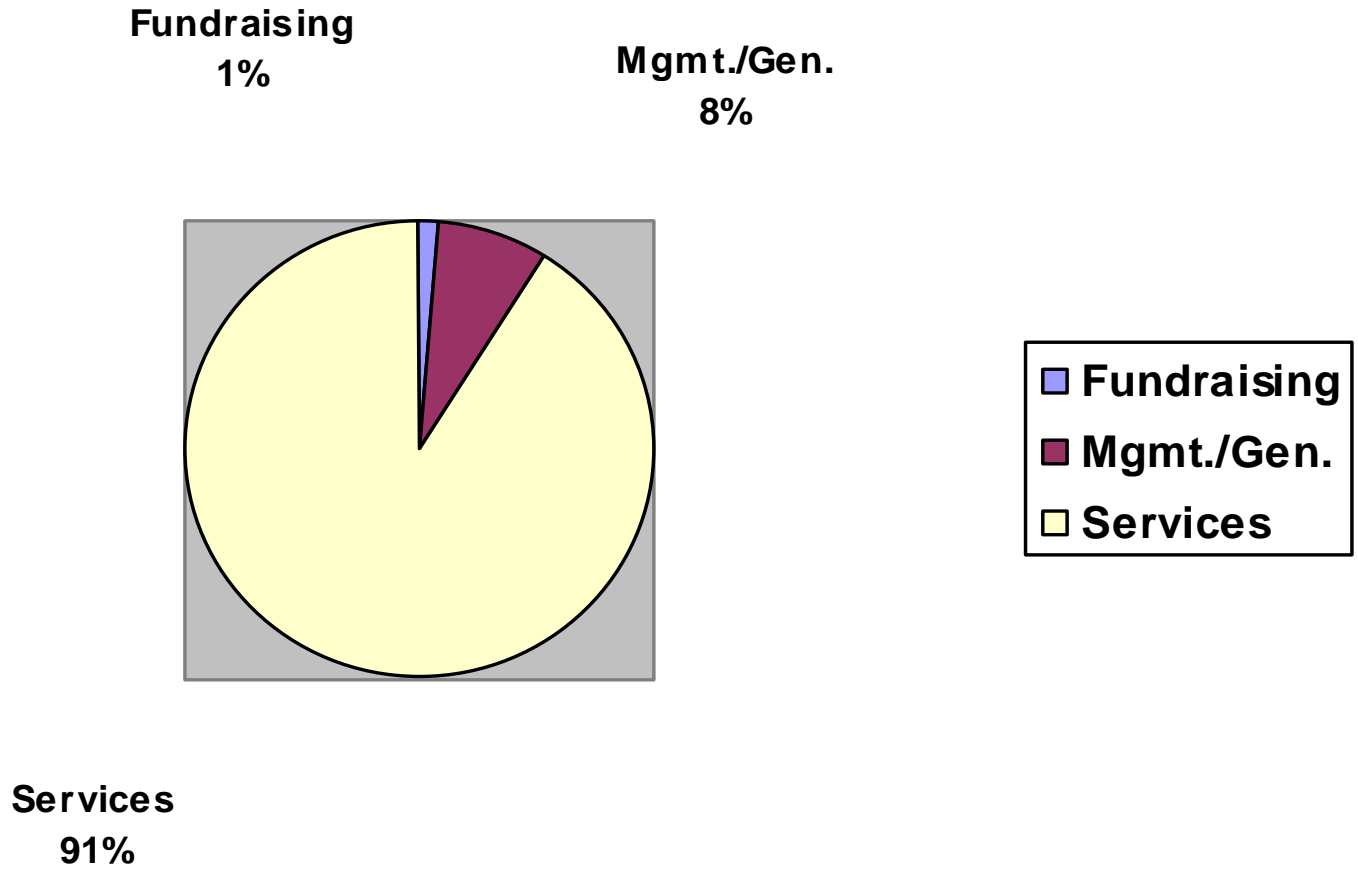
Project Safe's funding mix in FY 2010. Cash only.



Project Safe's funding mix in FY 2010 including non cash sources.



How funding is spent (FY 10 Audit)



Fundraising cost per dollar raised is 11 cents.

Long before our incorporation in 1990, Project Safe existed as a network of safe houses. Our founders opened their homes to strangers so that people with nowhere else to go could escape the horror of abuse. Today, we ask ourselves as an organization, “What is the equivalent act of courage that we must do to end domestic violence?”